

SECURITY  
DOORS  
PLANTATION  
SHUTTERS  
INSECT  
SCREENS



LouvreLock™

[www.kbsecurity.com.au](http://www.kbsecurity.com.au)

# BEAUTIFUL SHUTTERS, FITTED FAST



Aussie  
Manufactured



Custom-Made



4 Week  
Installation



Infinity  
SHUTTERS



## INFINITY SHUTTERS™

Certified Australian made, custom made, and installed in 4 weeks.

The rails, stiles and louvres of Infinity Shutters™ are all reinforced with aluminium inserts and made from polymer foam. These two factors ensure your new plantation shutters won't crack, chip, split or warp; a clear representation of strength and quality over competing products.

Infinity Shutters™ are: hypo-allergenic, recyclable, known to insulate far better than timber, fire-retardant and non-carcinogenic.

For coastal areas, stainless steel hinges are available on request.

Infinity Shutters™ can be fixed, hinged, sliding, bi-fold, bi-hinged or pivot-hinged.



### BLADE OPTIONS:

64mm  
89mm  
114mm



### COLOURS:

Vivid  
Bright  
Classic  
Off



[www.kbsecurity.com.au](http://www.kbsecurity.com.au)

# CONTROL YOUR ENVIRONMENT™

LouvreLock™



## LOUVRELOCK™ ALUMINIUM SHUTTERS

The LouvreLock™ range of aluminium shutters includes a Standard and Plus option.

They require little to no ongoing maintenance, and are ideal for indoor and outdoor applications.

### STANDARD

For: Light, Wind, Rain  
Up to 1.500h  
Fixed, Hinged, Pivot-Hinged

### PLUS

For: Light, Wind, Rain, Stronger Winds, Storms  
1.500h +  
Fixed, Hinged, Pivot-Hinged, Sliding, Bi-fold



**STANDARD COLOURS:**  
White



**BLADE OPTIONS:**  
89mm



**SYSTEMS:**  
20 x 56 | 35 x 60  
40 x 40 | 50 x 40



**EXTRAS:** Slat Locks, Keyed Flush Bolt Locks, Hinged / Sliding Lock + Handle Set, Fly Screen



**POWDER-COAT COLOURS:**  
White Birch  
Surf Mist  
Anodic Matt Natural  
Dune  
Custom Black  
Monument  
Classic Cream / Primrose  
Paperbark / Stone Beige

[www.kbsecurity.com.au](http://www.kbsecurity.com.au)



# SECURITY SCREENS AT UNBEATABLE PRICES

## SUPA SHIELD™ SECURITY DOORS

Supa Shield™ is K&B's innovative way of holding .316 marine grade stainless steel woven mesh inside frame (used on security doors, security windows, patio screened enclosures and bi-folds).

The 'Hook-Clamp' procedure ensures you're provided with the strongest, most durable and stylish security door product on the market.

Designed and manufactured in Australia, K&B's Supa Shield™ product comes with a lining of rubber insulation to pro-actively prevent corrosion.

Supa Shield™ has passed AS5039-2008, and our experienced security installers are trained to fit our product in adherence to the relevant Australian Standards.

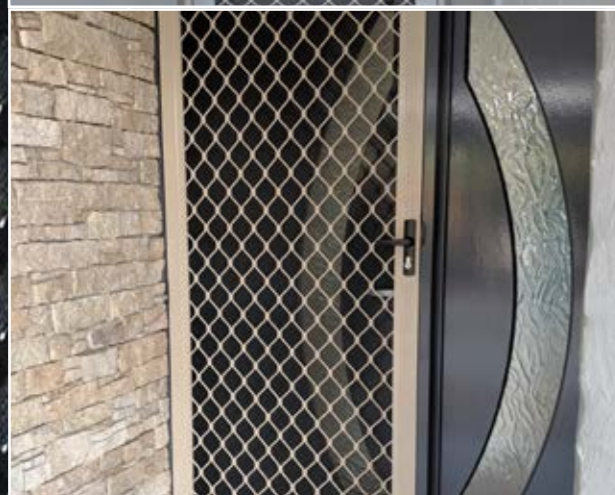
The .316 marine grade woven mesh used in Supa Shield™ Security Doors is covered by a 10 Year Warranty.



Hook-Clamp System

[www.kbsecurity.com.au](http://www.kbsecurity.com.au)

# DIAMOND GRILLE DOORS / STEEL BARS



## DIAMOND GRILLE DOORS / STEEL BARS

K&B's Diamond Grille doors and windows are a long-lasting solution that provide a strong visual and physical deterrent to would-be intruders.

Every door manufactured by K&B has 3 hinges for added protection, is riveted to the frame, and made with solid aluminium corner stakes to strengthen the doors' ability to absorb heavy impacts.

We also stock decorative cast panels.

## STEEL BARS

K&B's steel bars are sand-blasted, powder-primed and powder-coated to ensure a great finish.

There are several design patterns to choose from.



# INSECT SCREENS / PRIVACY SCREENS

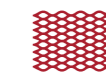


## INSECT SCREENS

K&B can professionally screen any area regardless of shape or size for screen doors, insect screens and patio screened enclosures.

They are a low maintenance solution to prevent insects, dust and debris entering your home and / or business.

Your fly screen can be hinged, sliding, fixed or bi-fold, and can be fitted with portholes, pet doors, or made-to-suit casement windows.



## MESH OPTIONS:

- Standard
- Paw Proof
- Aluminium Mesh
- Fine Screen Mesh
- Stainless Steel Mesh

## PRIVACY SCREENS

We can also do fixed horizontal slat or fixed elliptical blade privacy screens.



[WWW.KBSECURITY.COM.AU](http://WWW.KBSECURITY.COM.AU)

[SALES@KBSECURITY.COM.AU](mailto:SALES@KBSECURITY.COM.AU)

BRISBANE/IPSWICH:

(07) 3200 9152

GOLD COAST:

(07) 5529 7688

SUNSHINE COAST:

(07) 5493 8281

TOOWOOMBA:

(07) 4600 8750

